

HDCVI3.0 FAQ

BY BELCO



1. WHAT IS 4-IN-1 CCTV CAMERA?

It means the camera is interchangeable between these signals:

- HDCVI - TVI - AHD - CVBS (Analog)

2. HOW TO SWITCH SIGNALS?

Using a UTC Controller



Press "Enter" first and then hold the direction button for 10 seconds to change

Alternatively it can also be switched using the latest XVR Pentabrid DVR via PTZ Menu

3. HOW MUCH IS THE SWITCH CONSOLE?

UTC Controller : Refer CCTV price list : Page 13 (Model : PFM820)

4. AFTER SWITCH, IS THERE ANY CHANGES TO THE RESOLUTION / LENS ANGLE ?

- The native signal is HDCVI, whereby the resolution and sharpness will be optimum. After switching to another signal, there will be a drop in video quality.

- Lens Angle :

Model	Lens	Video Type	Angle	Lens	Video Type	Angle
1000-S3	2.8mm	CVI	85	3.6mm	CVI	60
		TVI			TVI	
		AHD			AHD	
		CVBS			CVBS	
1100-S3	2.8mm	CVI	91.6	6mm	CVI	46
		TVI			TVI	
		AHD			AHD	
		CVBS			CVBS	
1100-S3	3.6mm	CVI	78	8mm	CVI	39.4
		TVI			TVI	
		AHD			AHD	
		CVBS			CVBS	

Distance (Tested Workable Result)

1000-S3 & 1100-S3
 CVI 75-3 500m
 TVI 75-3 300m
 AHD 75-3 400m
 CVBS 75-3 300m

1200-S3 & 1220
 CVI 75-3 300m ; 75-5 500m
 TVI 75-3 300m ; 75-5 400m
 AHD 75-3 100m ; 75-5 200m
 CVBS 75-3 300m

Model	Lens	Video Type	Angle	Lens	Video Type	Angle
1200-S3	2.8mm	CVI	115.6	6mm	CVI	59.4
		TVI			TVI	
		AHD			AHD	
	3.6mm	CVBS	70	CVBS	N/A	
		CVI	89.9	CVI	41.4	
		TVI		TVI		
AHD	AHD					
1220	2.8mm	CVBS	54	6mm	CVBS	N/A
		CVI	106		CVI	51.2
		TVI			TVI	
	AHD	AHD				
	3.6mm	CVBS	54	CVBS	34	
		CVI	82.8	CVI	35.1	
TVI		TVI				
AHD	AHD					
		CVBS	52		CVBS	N/A

5. WHAT ARE THE DIFFERENCES BETWEEN HCVR4xxx / HCVR5xxx / HCVR7xxx

- 4000 Series DVR can support up to 720P cameras and less additional IP cameras compared to its big brothers.
- 5000 Series DVR can support up to 1080P non-realtime recording.
- 7000 Series DVR can support 1080P realtime recording for all channels.

6. WHAT IS NT MODEL?

NT Model refers to a Quadbrid DVR whereby it can process 4 types of signals: HDCVI, CVBS, AHD and IP. All other features are exactly the same as S3 model.

7. DIFFERENCE BETWEEN S3 AND S2?

S3 model is enhanced in terms of Hard Disk capacity where it can now support up to 6TB per drive. It also supports additional IP cameras instead of replacing the analog channels as in S2 models. Each IP camera can go up to 5MP instead of only 2MP in S2. Additional features such as Intelligent Detection and Video Matrix are available on certain S3 models.

8. WHY HCVR8816S-S3?

This is the premium range Ultra Quadbrid DVR where it has high processing capabilities. It can support up to 64 IP cameras of 12MP each. Video signal inserted into its BNC input are self-adaptive, meaning it can auto-detect and display either HDCVI, AHD or CVBS signals. It also has Advance functions such as Smart Tracking and People Counting.

9. WHAT IS XVR?

COMING SOON IN DECEMBER!

XVR is the upgraded version of NT model where it can support all 5 signals in one device. The Pentabrid DVR has self-adaptive features to these signals: HDCVI / AHD / TVI / CVBS. Comes with built-in Video Analytics.

10. WHAT ARE CANNON ISP FEATURES?

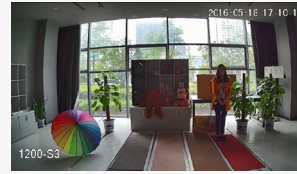
- Superior 2DNR

Cannon ISP adopts advanced 2DNR algorithm which reduces noise more efficiently. With superior 2DNR, the cannon series HDCVI cameras provides clearer image and helps to save storage space.



- Effective DWDR

Cannon series supports DWDR feature. In such applications as the camera is pointing to intense light or is placed somewhere with both glare and shadow, DWDR feature can be enabled in order to see both the front and back view clearly.



DWDR ON



DWDR OFF

11. WHAT ARE THE DIFFERENCES BETWEEN 1000 / 1100 / 1200 / 1220 SERIES CAMERAS

- Higher sharpness and more details.
- Upgraded clarity and more vivid colours.
- More details can be captured.
- Uniform light luminence, bright view with less noise.

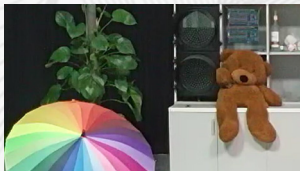
720P

1000 series (OV9732 + Cannon)

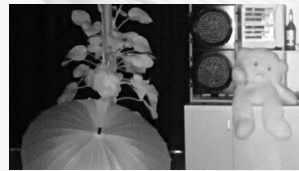
OV9732 Low Power HD ; Uses minimal power to capture crisp 720P (1Megapixel) HD Video.

1100 series (OV9755 + Cannon)

OV9755 Big Pixel HD ; Delivers best-in-class low light sensitivity.



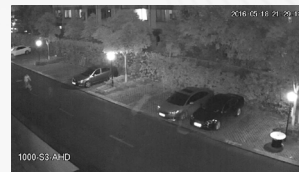
Video Signal : CVI



Video Signal : TVI



Video Signal : AHD



Video Signal : TVI



Video Signal : AHD



Video Signal : TVI

1080P

1200 series (OV2710 + Cannon)

OV2710 True 1080P ; High Definition Video Image Sensor



Video Signal : CVI



Video Signal : TVI



Video Signal : AHD



Video Signal : TVI

1220 series (IMX323 + Cannon)

IMX323 NIR Sensitivity Up ; Full HD Support High Sensitivity CMOS Image Sensor with a Super Small Package for Industrial Applications



Video Signal : CVI



Video Signal : TVI



Video Signal : AHD



Video Signal : TVI



Video Signal : AHD



Video Signal : TVI



R&D and Manufactured by DAHUA TECHNOLOGY

BELCO is OEM Partner of DAHUA TECHNOLOGY

www.belco.my